

# CROSS BEAMS FOR CATAMARANS

Our cross beams for catamarans are designed to be more than just a structural connection between the hulls. Integrated cable conduits, fittings for navigational lights and a clever attachment for the trampoline are good examples of details appreciated by the boat builders.

## Cross beams

Forestay dimension, Ø mm	Forestay fitting, hole diameter, Ø mm	Max length between hulls, mm	Bridle wire, Ø mm	Description of the system
10	16	6400	12	XB240-FS10-6400
12	19	5900	14	XB240-FS12-5900
14	22	5400	16	XB240-FS14-5400
14	22	6300	16	XB240-FS14-6300 HIGH



Non-Slip area on top of the cross beam.



Fitting for anchor or tender.



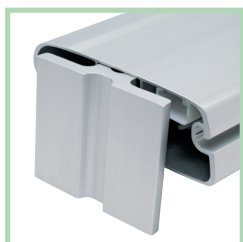
Slider



Snap-in trampoline sliders



The bridle wire is secured in a slot on top of the bridle support. All prepared for navigational lights.



Hull brackets can articulate to absorb movements between the hulls and the beam.



The cable from the navigational light is fed into the cross beam...



...and in to the cable conduit.



The forestay load is absorbed by a stainless support underneath the cross beam.

